



Massachusetts Department of Public Health
Bureau of Infectious Disease and Laboratory Sciences

MAIC Meeting 1/10/17
Influenza Season 2016-2017

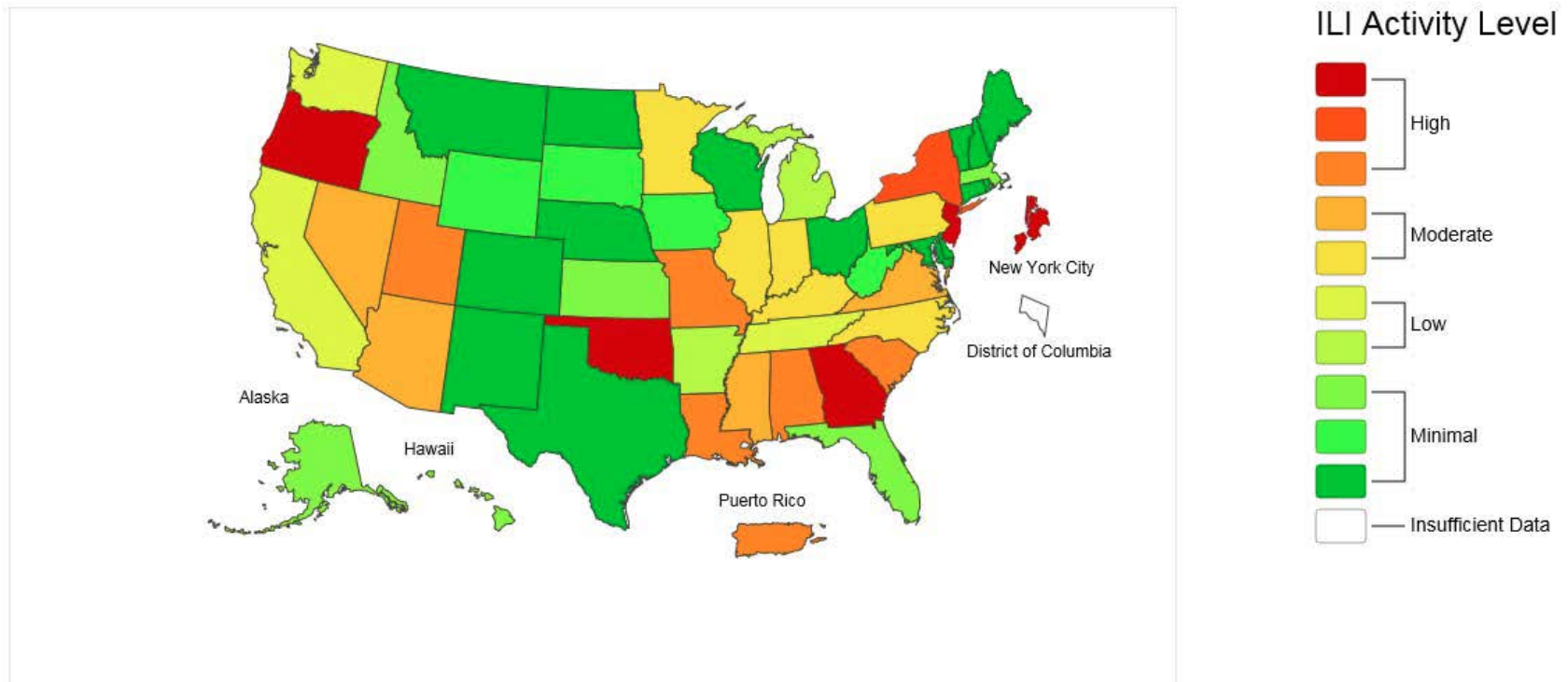
- Quick update
 - National
 - Local
- Key finding Flu vaccination coverage in the US
- NIVW – National Influenza Vaccination Week –
CDC - www.cdc.gov/flu/nivw/

Influenza Season 2016-2017

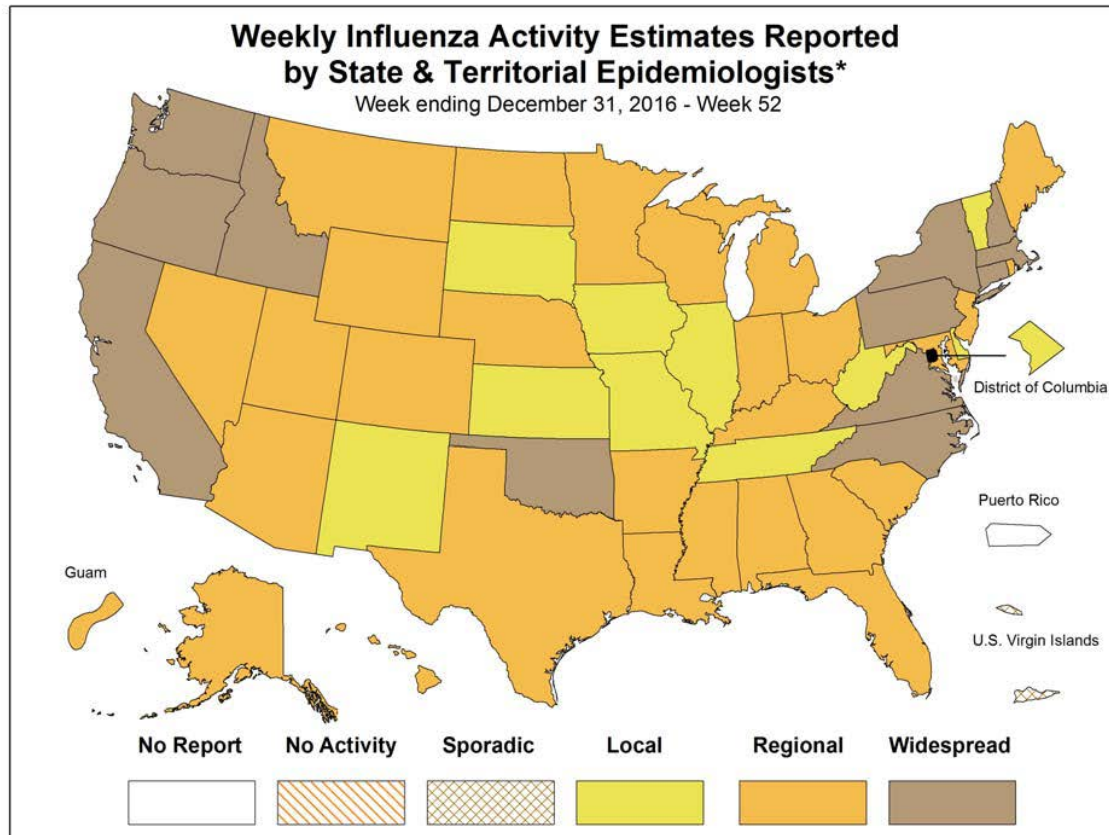
- Influenza A (H3) has been the most frequently identified influenza virus subtype reported by US public health laboratories.
- Nine out of ten surveillance regions in the US report elevated levels of outpatient ILI.

Influenza in the US 2016-17

Influenza-Like Illness (ILI) Activity Level Indicator Determined by Data Reported to ILINet
2016-17 Influenza Season Week 52 ending Dec 31, 2016



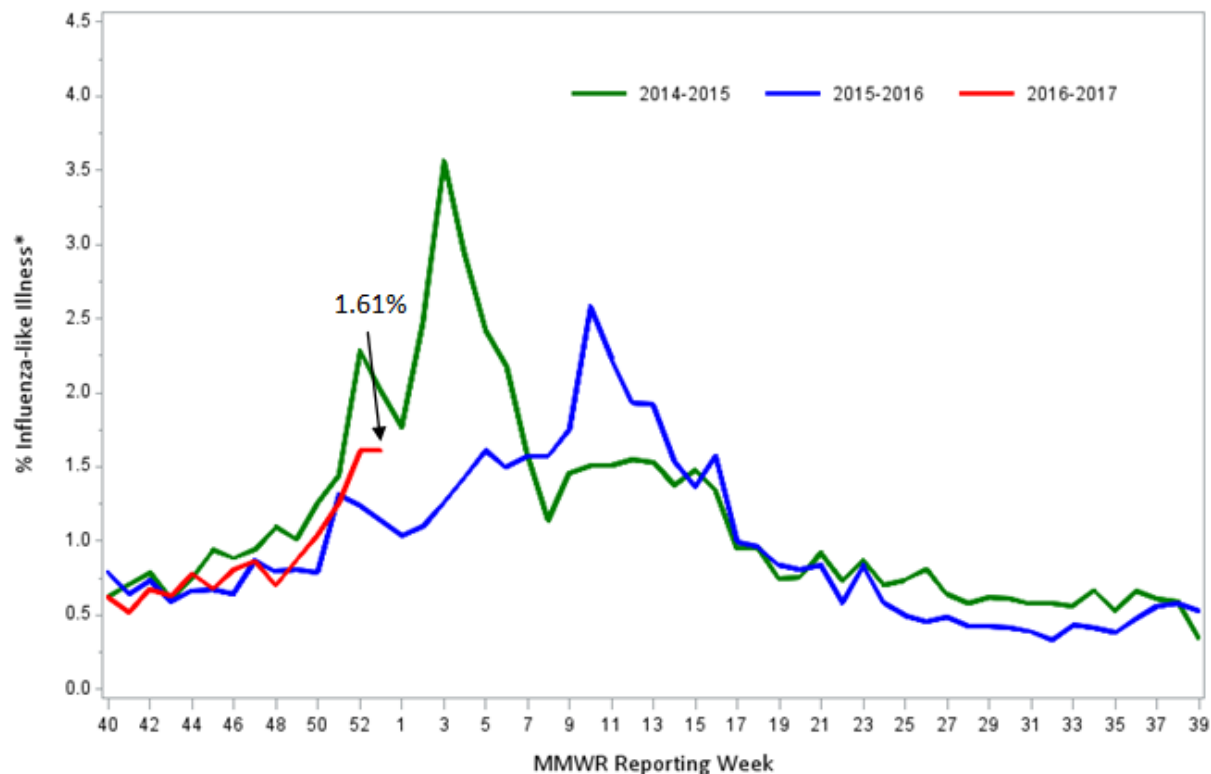
Influenza in the US 2016-17



* This map indicates geographic spread & does not measure the severity of influenza activity

Massachusetts - Influenza Activity 2016-17

Figure 1: Percentage of ILI visits reported by sentinel provider sites

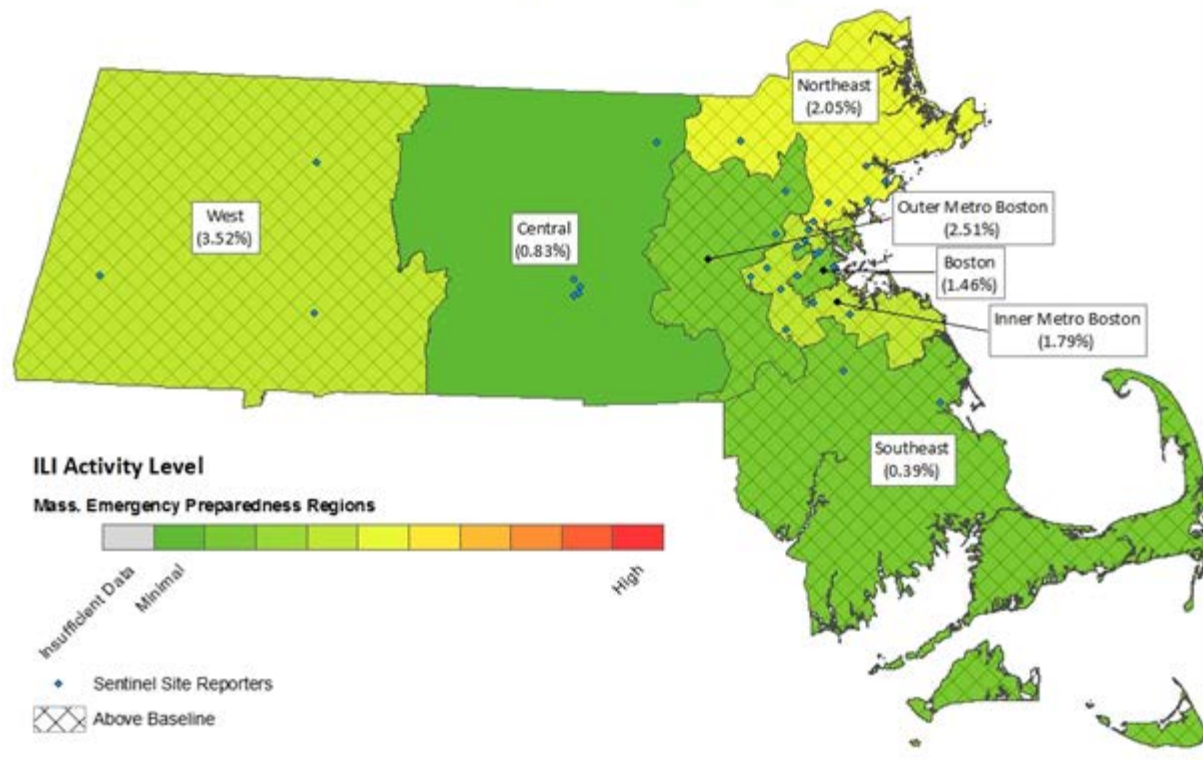


*Influenza-like illness (ILI, defined by fever >100F and cough and/or sore throat), as reported by Massachusetts sentinel surveillance sites

Massachusetts - Influenza Activity

2016-17

Figure 2: Percent ILI Activity Level Reported Weekly by Massachusetts Sentinel Sites



National Early-Season Flu Vaccination Coverage, United States, November 2016

- **Key Findings**
- Only approximately two of every five children and adults in the United States were vaccinated by early November 2016:
 - 39.8% of all persons 6 months and older
 - 37.3% of children 6 months through 17 years
 - 40.6% of adults 18 years and older

National Early-Season Flu Vaccination Coverage, United States, November 2016

- Early 2016–17 flu season vaccination coverage was similar to coverage at the same time last flu season for children, adults, and all persons 6 months and older.
- Among both children and adults, early-season flu vaccination coverage showed no racial/ethnic differences.

National Early-Season Flu Vaccination Coverage, United States, November 2016

- Among both adults and children, the most common places reported for receiving flu vaccination were medical locations (children: 85.4%, adults: 51.9%). Retail settings (24.3%) and workplaces (17.6%) were other important venues for adults.

National Early-Season Flu Vaccination Coverage, United States, November 2016

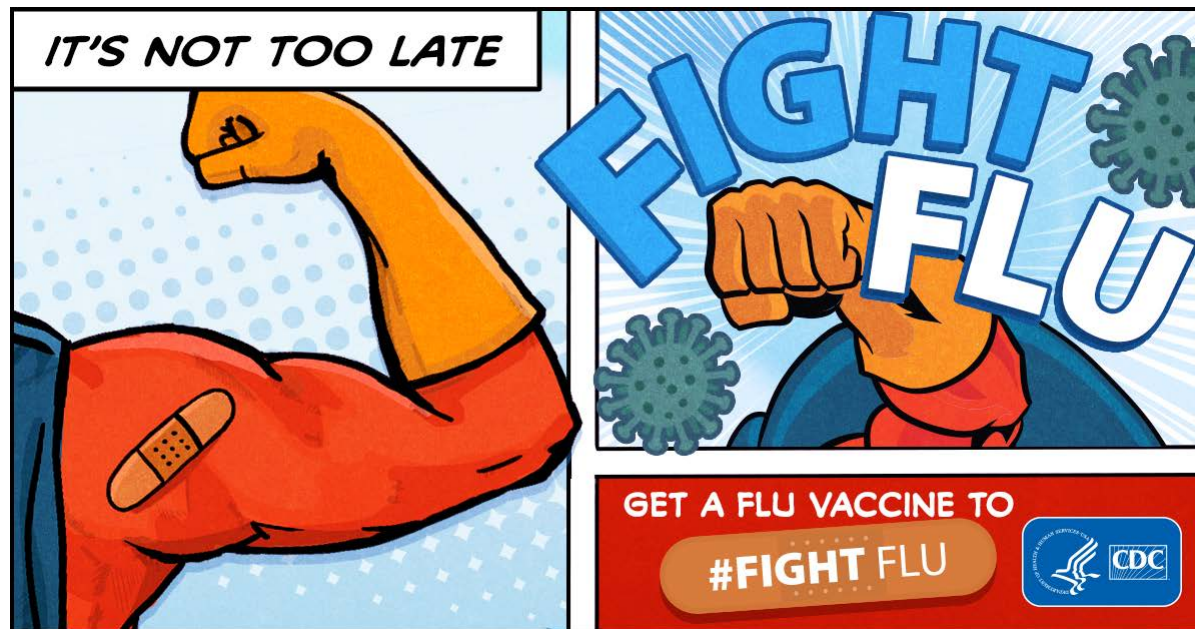
- Early-season 2016–17 flu vaccination coverage among HCP was 68.5%, similar to early-season coverage during the 2015–16 season (66.7%). During the previous two seasons, flu vaccination coverage increased by 12–13 percentage points from early season to the end of the season.

National Early-Season Flu Vaccination Coverage, United States, November 2016

- As of early November 2016, flu vaccination coverage among pregnant women before and during pregnancy was 46.6%, approximately 6 percentage points higher compared with 2015–16 early-season vaccination coverage (40.2%).

National Influenza Vaccination Week

- December 4-11, 2016
- MA Department of Health Blog: It's Not Too Late to Get a Flu Vaccine! <http://blog.mass.gov/publichealth/flu-facts/its-not-too-late-to-get-a-flu-vaccine/>
- Tweets throughout the week on DPH Twitter



CDC Flu retweeted MDPH tweet and blog

Home Moments

Search Twitter

Have an account? Log in

CDC

FLU

TWEETS 3,890 FOLLOWING 129 FOLLOWERS 425K LIKES 291 LISTS 1


Follow

CDC Flu @CDCFlu


Flu-related updates from the Centers for Disease Control & Prevention. Comments received are subject to PRA & may be archived go.usa.gov/8Ea.

Atlanta, GA
cdc.gov/flu
Joined October 2008


164 Photos and videos



IT'S NOT TOO LATE



FIGHT FLU



GET A FLU VACCINE TO #FIGHT FLU

CDC

CDC Flu Retweeted

Mass. Public Health @MassDPH · Dec 9

Everyone 6 months and older is recommended to get a #flu vaccine every year. More info: bit.ly/2qUMr2n #FightFlu #NIVW2016

CDC Flu @CDCFlu · 1h

Healthcare professionals: We've got the resources and data you need to help your patients #FightFlu! cdc.gov/flu/profession

New to Twitter?
Sign up now to get your own personalized timeline!

Sign up

You may also like · Refresh

- FluGov @FluGov
- CDC_eHealth @CDC_eHealth
- CDC @CDCgov
- CDC Emergency @CDCemergency
- NIH @NIH

Worldwide Trends

- Craig Sager 37.4K Tweets
- #SuperMarioRun 55.5K Tweets